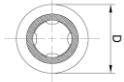


■ CELL CHARACTERISTICS

Capacity	Typical	2600 mAh 9.5 Wh
Cell Voltage	Nominal	3.6 V
	Charge	4.2 V
Charge Current	Standard	2.6 A
	Maximum	6.0 A
Charge Time	Standard	1.5 hr
Discharge Current	Maximum	35 A
Internal Resistance	AC (1 KHz)	20 mΩ (Max)
Ambient Temperature	Charge	0°C to 60°C
	Discharge	-40°C to 60°C
Energy Density	Volumetric	535 Wh/l
	Gravimetric	190 Wh/kg

■ PHYSICAL CHARACTERISTICS



Shape	Cylindrical
Can	Steel
Diameter	18.6 mm (Max)
Height	65.2 mm (Max)
Weight	50 g (Max)

The information contained herein is for reference only and does not imply a performance guarantee or a product warranty. Specifications and characteristics are subject to change without prior notice. For application specific information, please contact E-One Moli Energy Sales and Applications or the nearest MOLICEL® recognized agent. **This product is prohibited for use in and shall not be sold for use in e-cigarettes, vaporizers (e-cig, vape, mod) or any applications not permitted in Molicel product specifications and Molicel terms and conditions (<https://www.molicel.com/terms-and-conditions/>).**

For application specific information, please contact E-One Moli Energy Sales and Applications or the nearest MOLICEL® recognized agent.

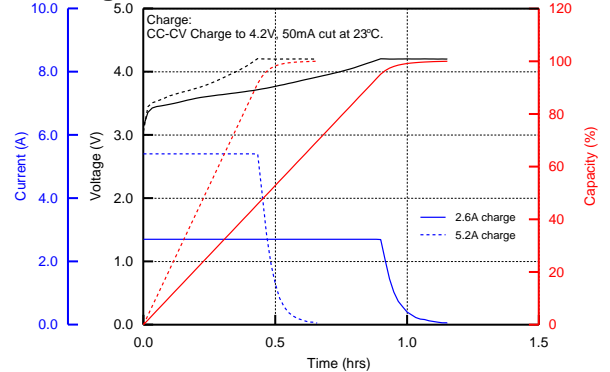
Version: 1.4

■ Taiwan Facility
 10 Dali 2nd Rd., Shan-Hwa,
 Tainan City, Taiwan, R.O.C.
 Tel: 886-6-505-0666
 Fax: 886-6-505-0777
<mailto:service@molicel.com>
<http://www.molicel.com>

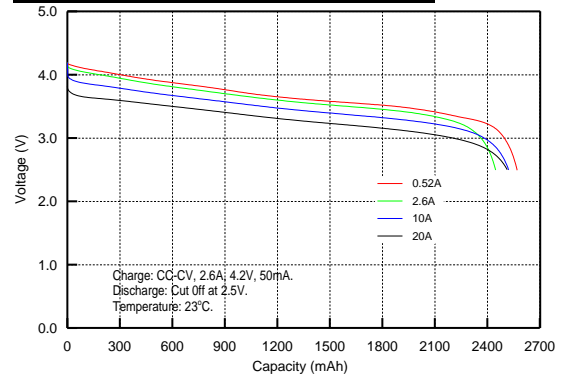
■ Canada Facility
 20 000 Stewart Crescent
 Maple Ridge, BC, Canada, V2X 9E7
 Tel: 1-604-466-6654
 Fax: 1-604-466-6600
<mailto:molicel@molicel.com>
<http://www.molicel.com>

■ Headquarters
 10F, 113, Sec.2, Zhung Shan N Rd.,
 Taipei, Taiwan, R.O.C.
 Tel: 886-2-2567-3500
 Fax: 886-2-2567-6500

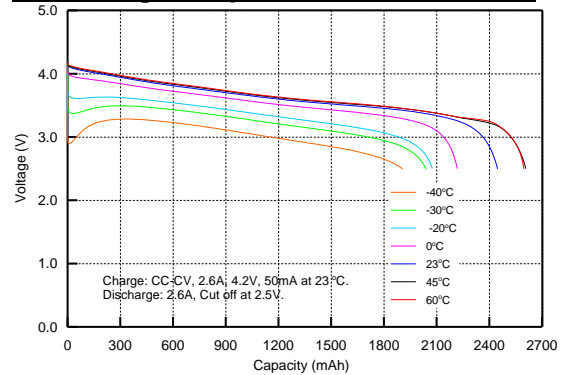
■ Charge Characteristics



■ Discharge Rate Characteristics



■ Discharge Temperature Characteristics



■ Cycle Characteristics

